

## 2014 Partners in Excellence

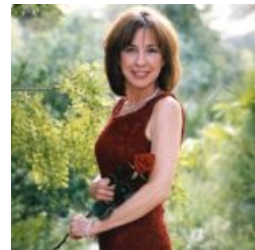
### **Nancy Ellen Coleman** Nashville Opera Guild

Nancy has been a tireless supporter of the Nashville Opera since its founding in 1997. She has a deep commitment to the Nashville Opera Guild, which provides invaluable support for the Nashville Opera Association. She has served the Guild not only as President for two years, but also in chairing the Guild's premier fundraiser, as well as willingly performing more mundane but essential tasks such as entering data and ensuring mailings go out. But Nancy's support of the Nashville Opera does not end with her work for the Guild. She has opened her hearth and home to the Opera for twenty years, from housing young artists to hosting auctioned dinners serving fresh produce from her farm, which are renowned for both the quality of the fare and the engaging hosts. A testament to her dedication was the comment, "Nancy Coleman is a professional who is cherished by the Nashville Opera Guild, who operates with diplomacy and sound response."



### **Paula Damore** Austin Lyric Opera Guild

Paula has been a member of the Austin Lyric Opera Guild since the late '90s. During that time, she was guild President and steered the Guild through a defining period, culminating in what now is a stronger organization with the ability to better nurture and promote Austin Lyric Opera. She volunteers for whatever tasks need to be done, from licking stamps for a membership mailing to manning a phone to encourage season ticket holders to renew their subscriptions.



For the past three years, Paula has spearheaded the Pre-Opera Gala Dinners and has been responsible for reviving the glamour and excitement of the evening, resulting in consistently sold out events as well as attracting a new opera audience. "Paula seeks no recognition for the time and effort she has devoted to the Guild. Her reward seems to be in experiencing the joy of opera and of seeing newcomers come to their own awareness of this wonderful art form."

### **Donald and Susan Drake** Glimmerglass Opera Guild

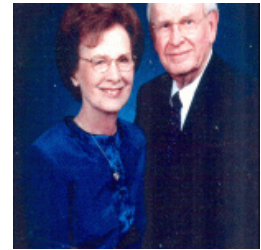
Don and Sue joined the Glimmerglass Opera Guild in 1993 and very soon after were elected to the Guild Board. During their years of service they have given more than 2,500 hours of service. They were at nearly every performance as volunteer ushers, with thousands of hours given above their Guild participation. They have been major participants in helping to host the cast parties, which are open to the public as well as the performers, resulting in a large attendance. In addition to these ongoing projects, Donald Drake served as Glimmerglass Opera Guild President for three



terms. Susan Drake served as Interim Guild Board Secretary and as a member of the Guild's Nominating Committee. Their participation in Guild activities does not reflect the entirety of their importance to the organization, however, for the impact of their dedication and leadership throughout the years cannot be measured simply in terms of hours or titles. In 2013, Don and Sue retired from the Board they served so well. "It is not an overstatement to say that during their years of volunteer service to Glimmerglass, the roles Don and Sue played have been crucial to the success of the Guild and contributed greatly to the company."

### **Annette and Garry Nall** Amarillo Opera Bravo

Garry and Annette Nall are a dynamic duo committed to furthering the mission of Amarillo Opera through their presence at each performance and any activity related to the opera. They support Amarillo Opera with their time, talents and funds. Annette and Garry serve as hospitality co-chairs of Bravo and hospitality is the primary mission of Bravo. They are at the heart of this mission with their organization of all hospitality activities for the twenty-member Bravo support group. They also coordinate other Bravo activities, including providing food for cast welcome parties and cookies for receptions for off main stage performances. Garry and Annette usher for the student performances and volunteer to cover any other jobs that need to be done for the operas. Annette has been on the working committee for the fundraising ball since its inception three years ago. "Their generosity and unfailing kindness is a symbol of what Bravo is about."



### **Donna White Angel** Capitol City Opera Company Volunteers

Donna Angel and her late husband Henry founded Capitol City Opera Company in 1983; because of her relentless dedication, they are celebrating their 31<sup>st</sup> year. Donna never received a salary from Capitol City Opera Company and she continues today in a "volunteer" role as Artistic Director Emeritus and consultant. She is a working board member in every sense of the word, lending her time and talent to every aspect of the company. From helping with auditions to selling company paraphernalia at shows to cooking her world famous Swedish meatballs for sponsor parties, no job is too small for Donna. Especially moving was the comment, "...no one can touch the heart and soul of a singer like Donna Angel. Because of her ability to cast the right singer in the right role and help them make it their own, audiences come away with their own hearts and souls touched. With her continuing volunteer, selfless spirit, she not only brings opera to a city and opportunity to singers, she changes lives."

